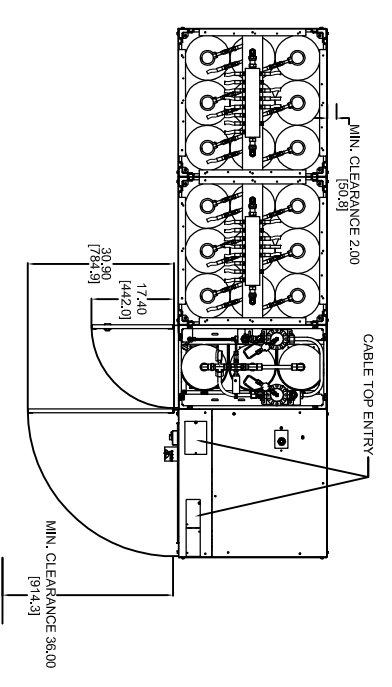
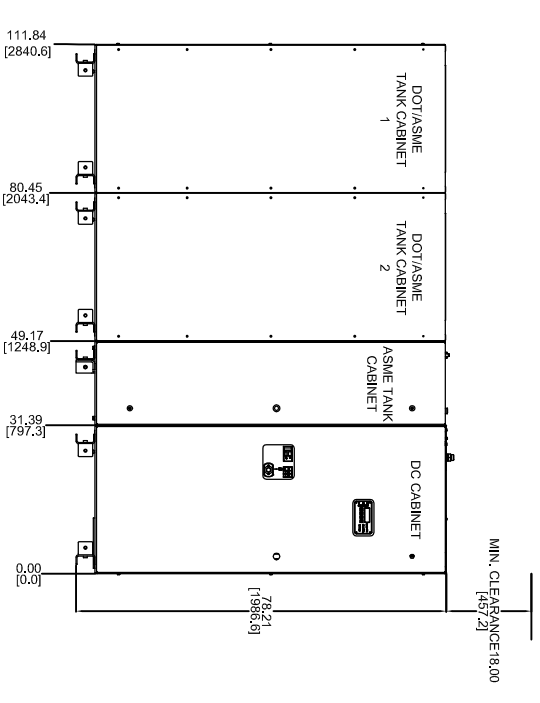


NOTES:
 1) SKINS ONLY ON OUTER CABINETS, NONE ARE ATTACHED BETWEEN CABINETS IN AN IN-LINE SYSTEM.

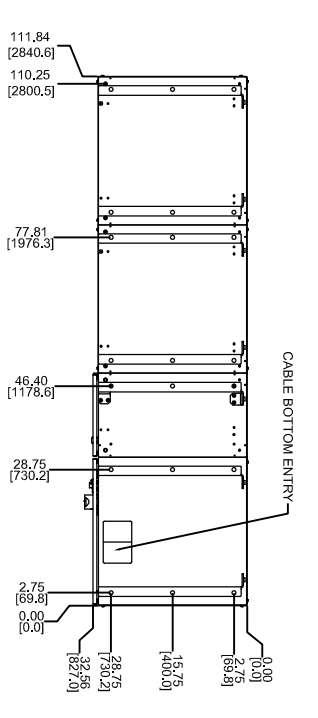
REV	DESCRIPTION	BY	DATE	APPR
A	PILOT RELEASE ECN #			



TOP VIEW



FRONT ELEVATION



SECTION A-A

PRELIMINARY - FOR INFORMATION ONLY, NOT FOR CONSTRUCTION.

<p>ACTIVE POWER, INC. CONFIDENTIAL. THIS DOCUMENT AND THE INFORMATION CONTAINED HEREIN ARE CONFIDENTIAL AND NOT TO BE COPIED OR REPRODUCED IN ANY MANNER WITHOUT THE EXPRESS WRITTEN CONSENT OF ACTIVE POWER, INC.</p>	<p>UNLESS OTHERWISE SPECIFIED, ALL DIMENSIONS IN INCHES & KILOGRAMS. TOLERANCES ARE: .XX: ±.03 .XXX: ±.010 ANGLES: ±.5°</p>
<p>THIRD ANGLE PROJECTION</p>	<p>MATERIAL: SEE NOTES FINISH: SEE NOTES</p>

<p>DO NOT SCALE DRAWING</p>	<p>APPROVALS JLS AM</p>	<p>DATE 10/14/05 10/14/05</p>	<p>TITLE OUTLINE, COOLAIR DC, 2 TANK CABINET, 10 MIN., 80KW</p>
<p>ACTIVE POWER® AUSTIN TEXAS</p>	<p>SCALE: N/A</p>	<p>SHEET: 1 OF 1</p>	<p>REV: P00</p>