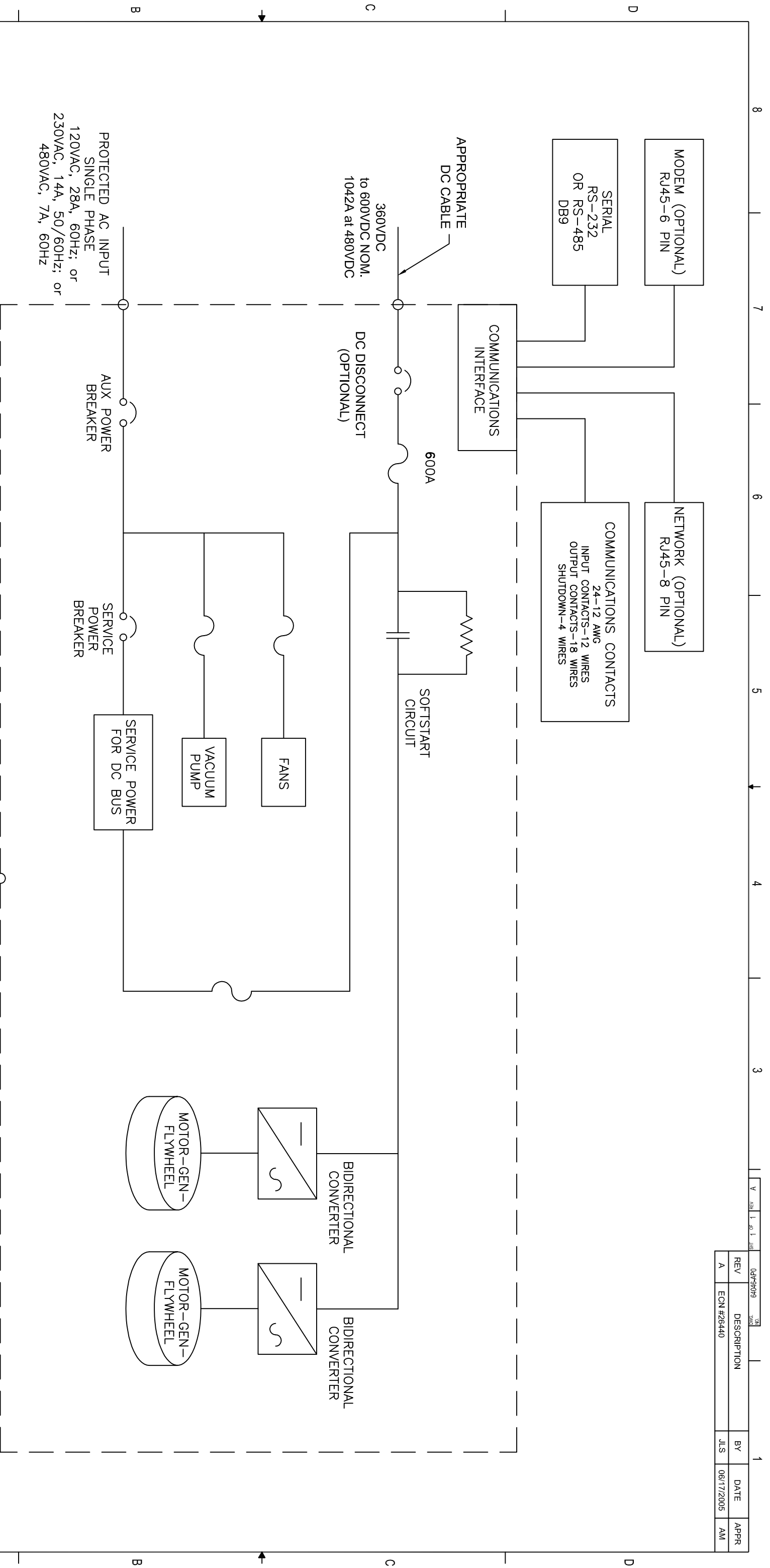


REV	DESCRIPTION	BY	DATE	APPR
A	ECN #26440	JLS	06/17/2005	AM

04V-91019 3/01
 1 of 1 JLS
 1 of 1 JLS



PROTECTED AC INPUT
 SINGLE PHASE
 120VAC, 28A, 60HZ; or
 230VAC, 14A, 50/60HZ; or
 480VAC, 7A, 60HZ

360VDC
 to 600VDC NOM.
 1042A at 480VDC

6000A

DC DISCONNECT
 (OPTIONAL)

SOFTSTART
 CIRCUIT

AUX POWER
 BREAKER

SERVICE
 POWER
 BREAKER

SERVICE POWER
 FOR DC BUS

FANS

VACUUM
 PUMP

MOTOR-GEN-
 FLYWHEEL

MOTOR-GEN-
 FLYWHEEL

BIDIRECTIONAL
 CONVERTER

BIDIRECTIONAL
 CONVERTER

TO GROUND

<p>ACTIVE POWER, INC. CONFIDENTIAL. THIS DOCUMENT AND THE INFORMATION CONTAINED HEREIN ARE CONFIDENTIAL AND NOT TO BE COPIED OR REPRODUCED IN ANY MANNER WITHOUT THE EXPRESS WRITTEN CONSENT OF ACTIVE POWER, INC.</p>		<p>UNLESS OTHERWISE SPECIFIED, ALL DIMENSIONS IN INCHES & SHAPE ANGLES, TOLERANCES ARE:</p> <p>.XX: ±.03 .XXX: ±.010 ANGLES: ±.5°</p>		<p>DO NOT SCALE DRAWING</p>		<p>Active Power® AUSTIN TEXAS</p>	
<p>THIRD ANGLE PROJECTION</p>		<p>MATERIAL SEE NOTES</p>		<p>APPROVALS JLS DATE 06/17/05</p>		<p>TITLE CLEANSOURCE DC ONELINE, BOTTOM ENTRY CSDC-500</p>	
<p>FINISH SEE NOTES</p>		<p>DATE 06/17/05</p>		<p>SIZE B</p>		<p>64046-AP0</p>	
<p>SCALE NONE</p>		<p>SHEET 1 OF 1</p>		<p>REV A</p>		<p>SCALE NONE</p>	