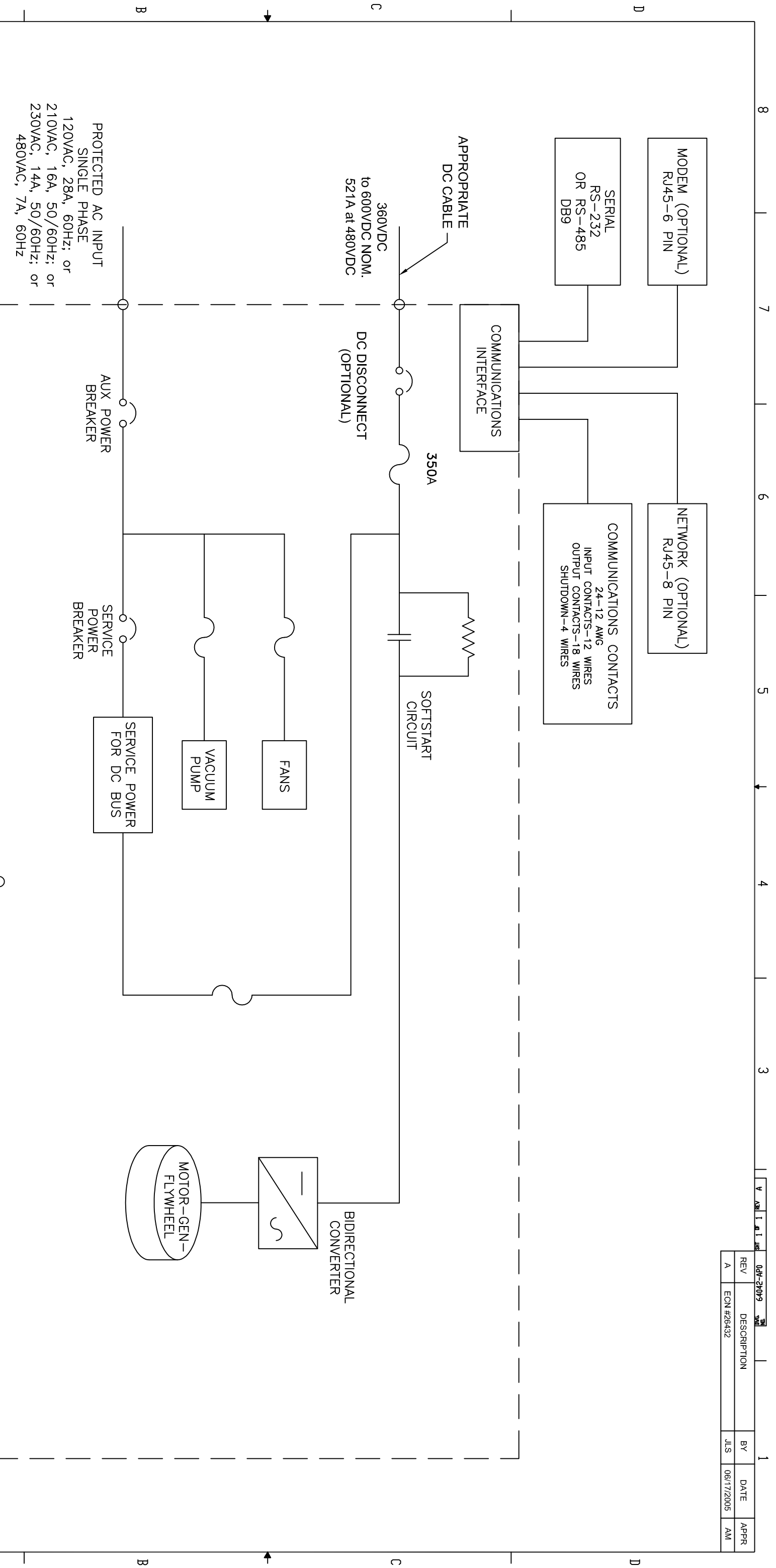


REV	DESCRIPTION	BY	DATE	APPR
A	ECN #26432	JLS	06/17/2005	AM



PROTECTED AC INPUT
SINGLE PHASE
120VAC, 28A, 60Hz; or
210VAC, 16A, 50/60Hz; or
230VAC, 14A, 50/60Hz; or
480VAC, 7A, 60Hz

360VDC
to 600VDC NOM.
521A at 480VDC

350A

SOFTSTART
CIRCUIT

AUX POWER
BREAKER

SERVICE
POWER
BREAKER

SERVICE POWER
FOR DC BUS

FANS

VACUUM
PUMP

MOTOR-GEN-
FLYWHEEL

BIDIRECTIONAL
CONVERTER

COMMUNICATIONS
INTERFACE

COMMUNICATIONS CONTACTS
24-12 AWG
INPUT CONTACTS-12 WIRES
OUTPUT CONTACTS-18 WIRES
SHUTDOWN-4 WIRES

MODEM (OPTIONAL)
RJ45-6 PIN

NETWORK (OPTIONAL)
RJ45-8 PIN

SERIAL
RS-232
OR RS-485
DB9

TO GROUND

ROTATING MACHINERY
CABINETS MUST BE ANCHORED IN ACCORDANCE TO SPECIFICATIONS GIVEN IN THE INSTALLATION MANUAL.
NO OTHER ANCHORING METHOD IS ACCEPTABLE.

ACTIVE POWER, INC. CONFIRMS THAT THE DIMENSIONS IN THIS DOCUMENT AND THE INFORMATION CONTAINED HEREIN ARE CONFIDENTIAL AND NOT TO BE COPIED OR REPRODUCED IN ANY MANNER WITHOUT THE EXPRESS WRITTEN CONSENT OF ACTIVE POWER, INC.		UNLESS OTHERWISE SPECIFIED, ALL DIMENSIONS IN INCHES & SHAPE ANGLES, TOLERANCES ARE:		DO NOT SCALE DRAWING		TITLE Active Power® AUSTIN TEXAS	
.XX: ±.03 .XXX: ±.010 ANGLES: ±.5°	THIRD ANGLE PROJECTION	FINISH SEE NOTES	MATERIAL SEE NOTES	APPROVALS JLS AM	DATE 06/17/05	SIZE B	DRAWING NO. 64042-AP0
TITLE CLEANSOURCE DC ONLINE, BOTTOM ENTRY CSDC-250				SCALE NONE	SHEET 1 OF 1	REV A	DATE 06/17/2005

