

## EMCP 3 REMOTE MONITORING SOFTWARE

The EMCP 3 Remote Monitoring Software Package is a PC based program, which allows the user to monitor and control a single generator set equipped with an EMCP 3.2 or 3.3 controller. The Remote Monitoring software allows the user to Monitor, Log, Graph and Control an operating generator set and allows a user to configure data monitoring and data acquisition processes. This software package is capable of running on a Windows® based operating system.

### FEATURES

#### DATA MONITORING

The EMCP 3 Remote Monitoring software allows the user to view EMCP 3 Network operating parameters. Engine and generator parameters can be viewed on a real-time basis. Events and diagnostics can also be viewed with the software.

Data may be viewed in one of three fashions:

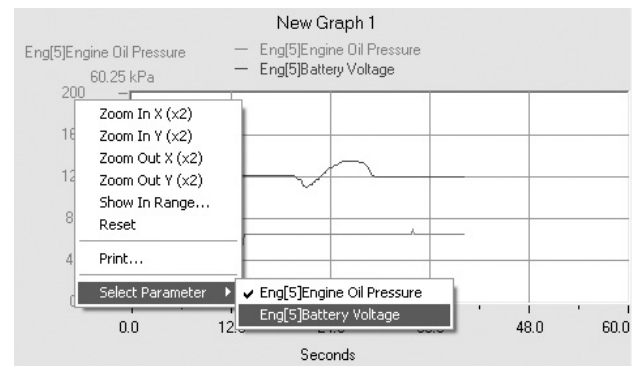
#### (1) Grid Data Monitoring

presents data to the user via a grid

Description	Value	Unit	Send All
Demo[1] Generator Average AC RMS Current	Offline	A	
Demo[1] Generator Average AC RMS Frequency	Offline	Hz	
Demo[1] Generator Average Line-Line AC RMS Voltage	Offline	V	
Demo[1] Generator Average Line-Neutral AC RMS Voltage	Offline	V	
Demo[1] Generator Front Bearing Temperature	Offline	Deg F	
Demo[1] Generator Overall Power Factor	Offline		
Demo[1] Generator Overall Power Factor Lagging	Offline		
Demo[1] Generator Phase A AC RMS Current	Offline	A	
Demo[1] Generator Phase A Apparent Power	Offline	kVA	
Demo[1] Generator Phase A Line-Line AC RMS Voltage	Offline	V	
Demo[1] Generator Phase A Line-Neutral AC RMS Voltage	Offline	V	

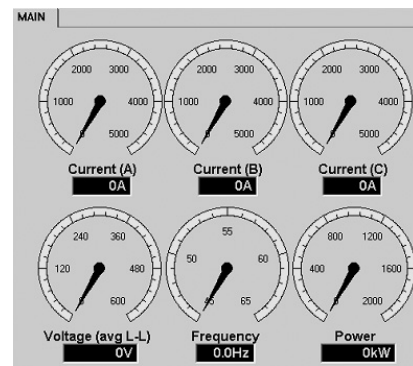
#### (2) Chart Data Monitoring

presents data to the user via an X-Y plot



#### (3) Control Panel Data Monitoring

Allows a user to monitor data via an instrument panel with variety of controls (knobs, switches, LED bars, gauges, etc)



## FEATURES (Continued)

### DATA LOGGING

Any parameter that can be viewed can also be logged. The EMCP 3 Remote Monitoring software allows the user to define when data should start being logged. This can be from user intervention, a change of state, a fault or diagnostic, or even a specific time and date.

### EVENT LOG VIEWER

EMCP 3 events can be viewed in the EMCP 3 Monitoring Software event viewer window. Events are time stamped by the real time clock in the EMCP 3. For each event, the number of occurrences and hour meter information are also displayed.

### EVENT SETPOINT ADJUSTMENT

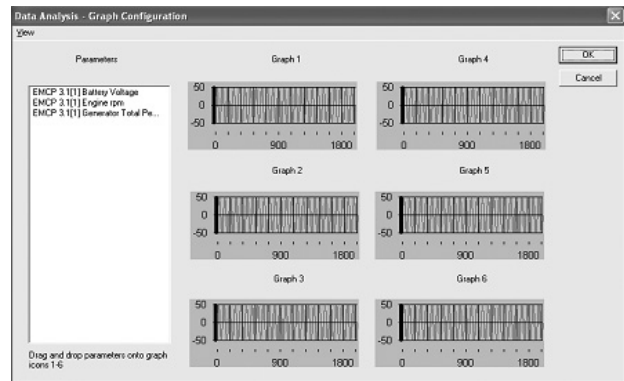
The EMCP 3 Monitoring Software allows the user to adjust EMCP 3 setpoints. It also allows users to obtain higher security access to the EMCP 3 needed to adjust certain setpoints.

### DDE LINK

The user can define which parameters, and at what scan rate, can be linked to other applications (such as Microsoft Excel) for monitoring.

### DATA GRAPHING

The EMCP 3 Remote Monitoring software also provides the ability to graph the data that is logged. With a simple drag and drop method, the user can graph some or all of the data that is logged into a data file. Colors and pen widths can easily be changed to meet user needs. Up to six different graphs can be generated from one data sample file. Each graph can use up to six parameters.



### REQUIREMENTS

- Pentium class PC, 90 Mhz or greater
- Windows 95/98/2000/XP/NT 4.0
- 40 Mbytes RAM

### COMMUNICATION

- Direct Connect via RS-485
- Remote Connection via Modem
- Baud Rates
  - 9600 (Default)
  - 14400
  - 19200
- Parity
  - Even
  - Odd
  - None (Default)